



waccg.putneymead@nhs.net | 020 8788 0686 | www.putneymead.co.uk

### Wimbledon Common Parkrun

Parkrun is a 5km run that is run across the UK and around the world. This takes place on Saturday mornings. The Royal College of GPs (RCGPs) have linked up with Parkrun as part of their **Wellbeing** programme. 1600 GP surgeries have joined up to Parkrun as a result. We have linked up with the Wimbledon Common Parkrun. We are building a team of both staff and patients to join in each week. As a team, we meet at 8:45 am on Saturday mornings at Wimbledon Common Windmill.



### Primary Care Network

We are now officially part of the Primary Care Network with 3 practices in Roehampton – Danebury Avenue, The Alton and Roehampton Lane surgeries. The Clinical Director post is held jointly by Dr Z Rose and Dr F Hasan (The Alton Surgery).

### Congratulations !

Yan Lok - for passing her prescribing exam

Dr Emily Mei - for passing her GP exam

### Leavers

After many years of service we say goodbye to nurses Sue and Jill from the Student Medical Centre who take a well deserved retirement

We are also bidding farewell to Dr Gilham and wish her all the best

### Patient Access

Having access to Patient Access allows you to do a number of things, such as:

- \* Booking appointments
- \* Ordering repeat prescriptions
- \* Pharmacy services
- \* Access medical records

View blood tests and recent consultations

We release appointments online everyday at the following times 7:57am, 12:00pm and 6:31pm

### Repeat Medication

All repeat medication can be requested through your nominated pharmacy or by coming into the surgery. Please note that all requests take up to **3 working days**. We do not take prescription requests over the phone.

### Results Line

Our results line is open each weekday between the hours of 1:00–2:30pm. Contact the following number to get your results : 020 8394 5452

### GP Starters

Dr Kate Bolwell  
Dr Nina Bjurstorm  
Dr Deshani Shan  
Dr Stella Okezie  
Dr Siobhan Carver

# PUTNEYMEAD GROUP



## MEDICAL PRACTICE

Newsletter

Issue 17

Summer 2019

waccg.putneymead@nhs.net | 020 8788 0686 | www.putneymead.co.uk

### Website

We are pleased to announce that we have a new website up and running. For all the latest news, general health advice, feedback and general enquiries please visit [www.putneymead.co.uk](http://www.putneymead.co.uk)

The website is fully responsive and viewable on smartphones and tablets as well as home PCs. Please take a moment to browse and if you have any feedback or suggestions please do let us know.

[www.putneymead.co.uk](http://www.putneymead.co.uk)

### DNA Appointments

#### DNA– Did Not Attend

When a patient doesn't cancel or attend an appointment, they are wasting NHS resources. We **will** always have a patient who could use that appointment. Please help us to make the NHS more efficient for you by cancelling using any of the following methods:

Phone us on 020 8788 0686

Use the ' Patient Access' website

Reply ' CANCEL' to your text reminder.

### Flu Vaccinations

Flu Vaccinations will be available at the surgery from the **16th September**. All appointments for weekdays must be booked. Saturday Flu clinics will have booked appointments and walk-in appointments available.

#### Who is Eligible ?

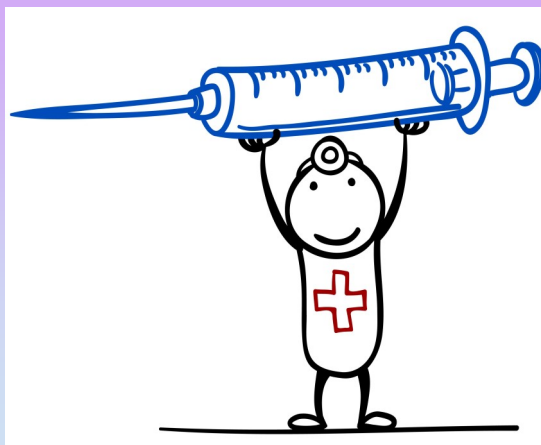
Patients over 65

Patients with chronic illnesses

- ◆ Patients with Asthma
- ◆ Patients who are pregnant

*If you are unsure, please speak to a member of reception.*

Children who are eligible for a flu vaccination will be able to get this done at the surgery from October 2019.



### Measles

**MEASLES OUTBREAK**—There have been 33 confirmed cases of Measles diagnosed in Wandsworth since May. **None of the affected had received the MMR vaccine.** Measles can lead to serious complications. If your child has not received the vaccine, or you are unsure, please speak to one of practice nurses.



**Follow- Putneymead on Twitter!** Our Twitter handle is **@Putneymead\_GP** and we will be tweeting about new events and updates at Putneymead, as well as general health news.